

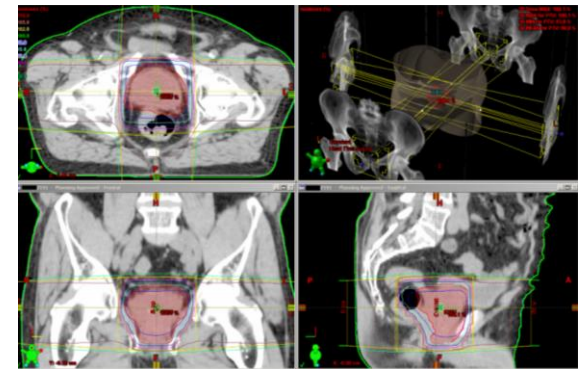
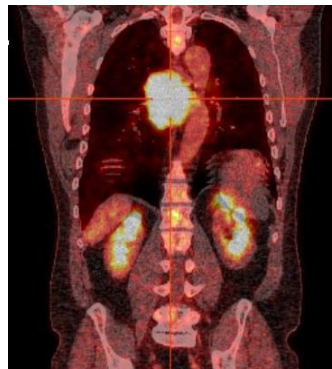
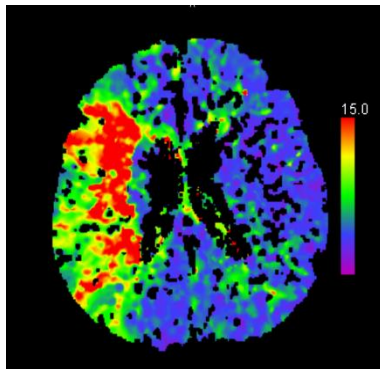
Klinik für Radiologie und Nuklearmedizin Klinik für Radioonkologie



Berufsbild

Besteht aus drei Fachgebieten:

- Diagnostische Radiologie
- Nuklearmedizin
- Radio-Onkologie



Konventionelle Radiologie



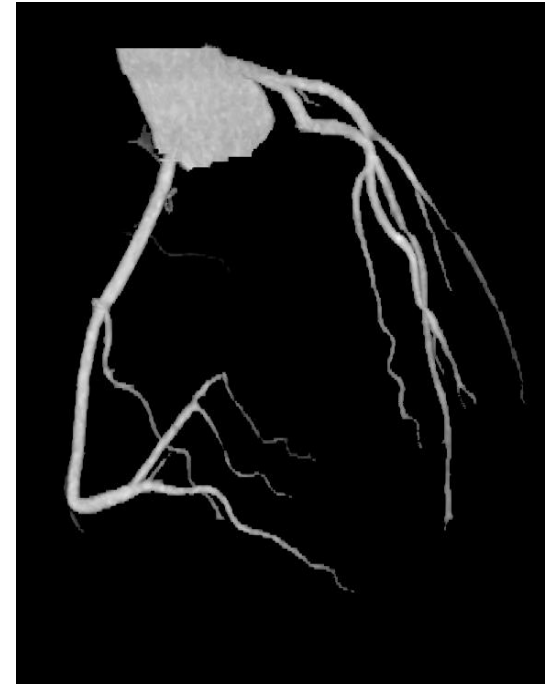
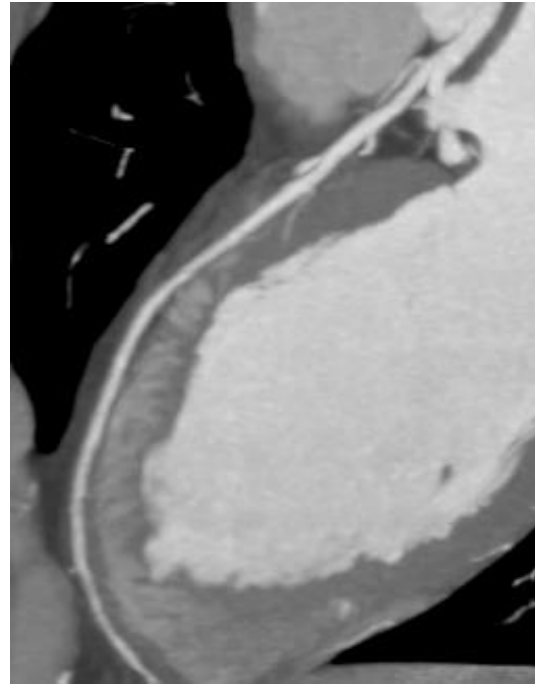
Computertomografie



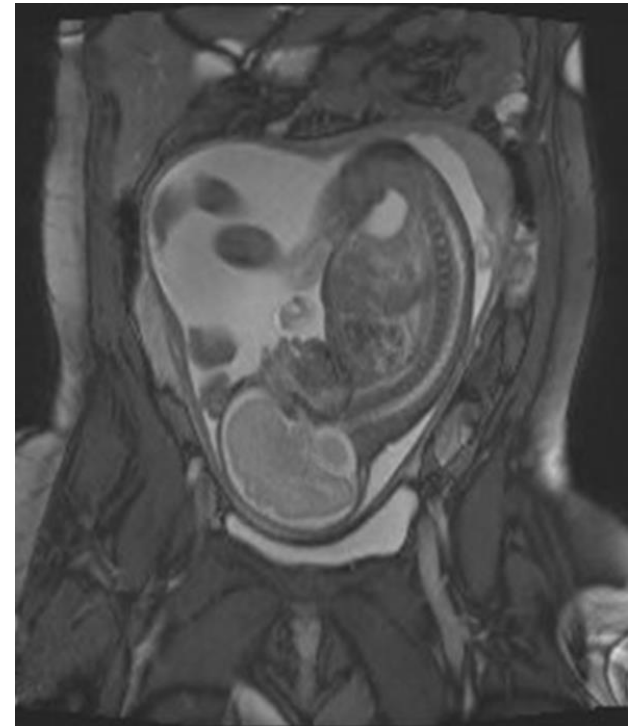


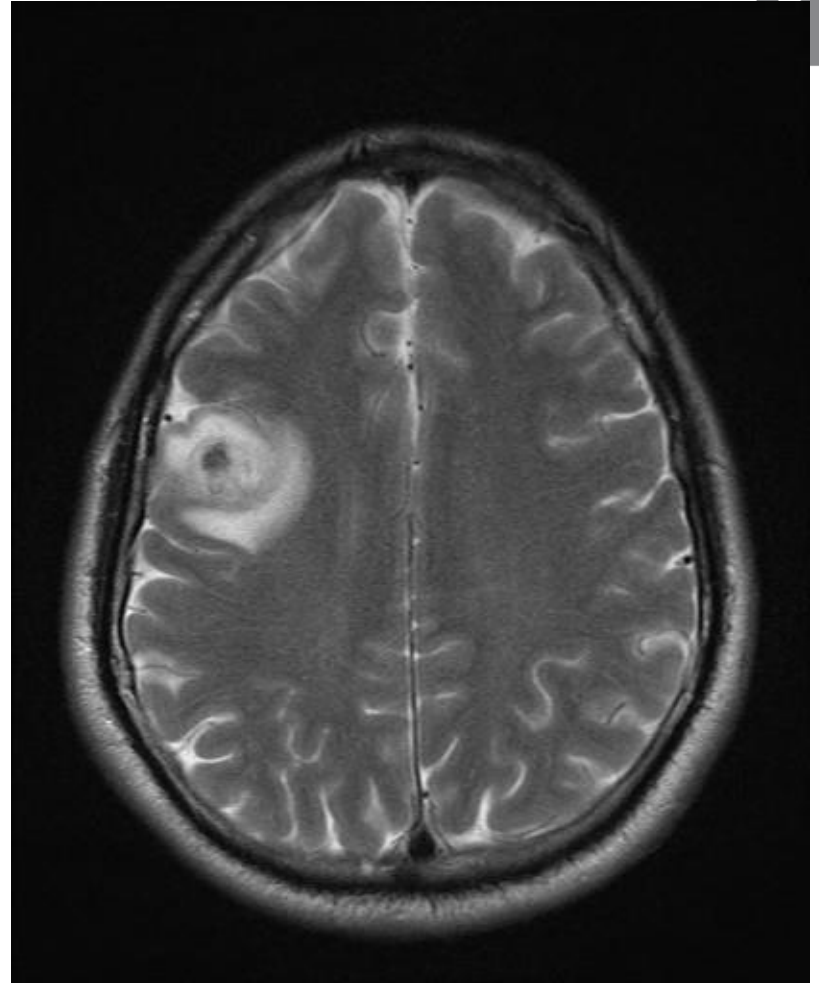
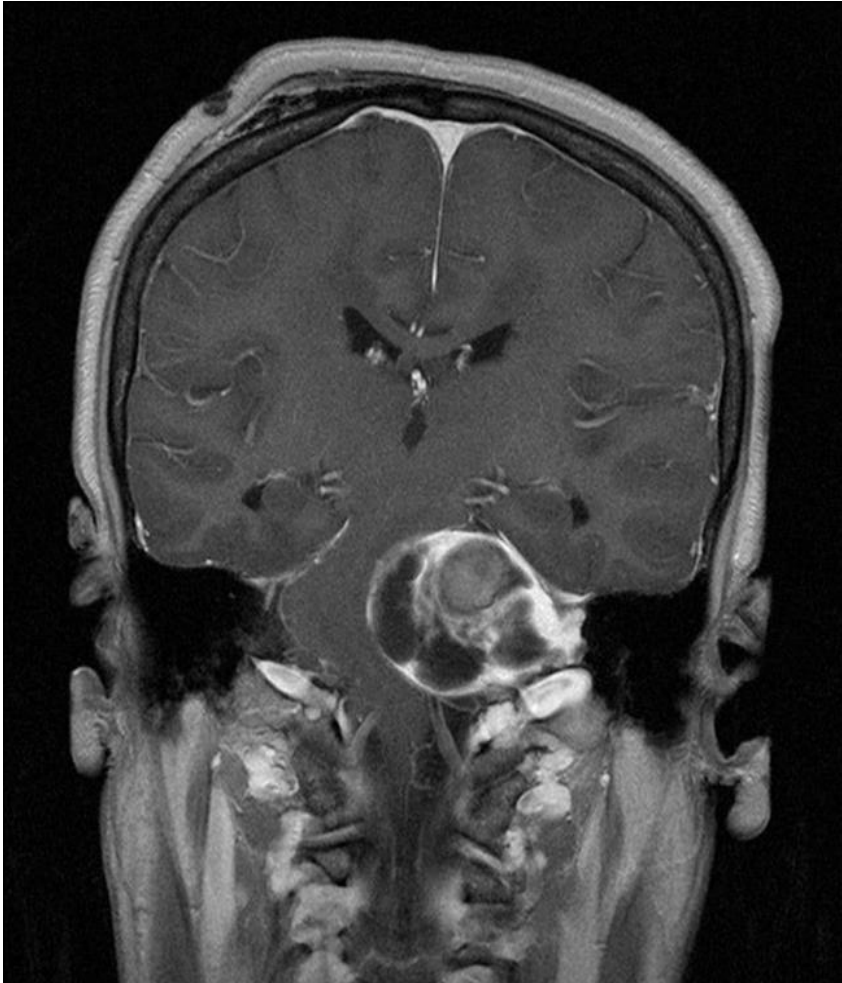






Magnetresonanztomografie



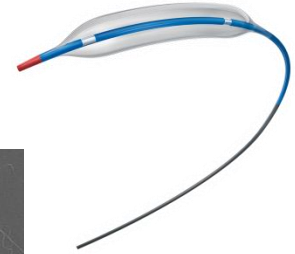
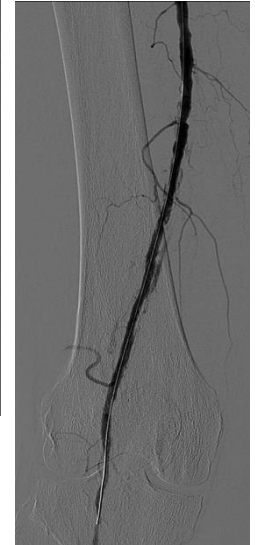
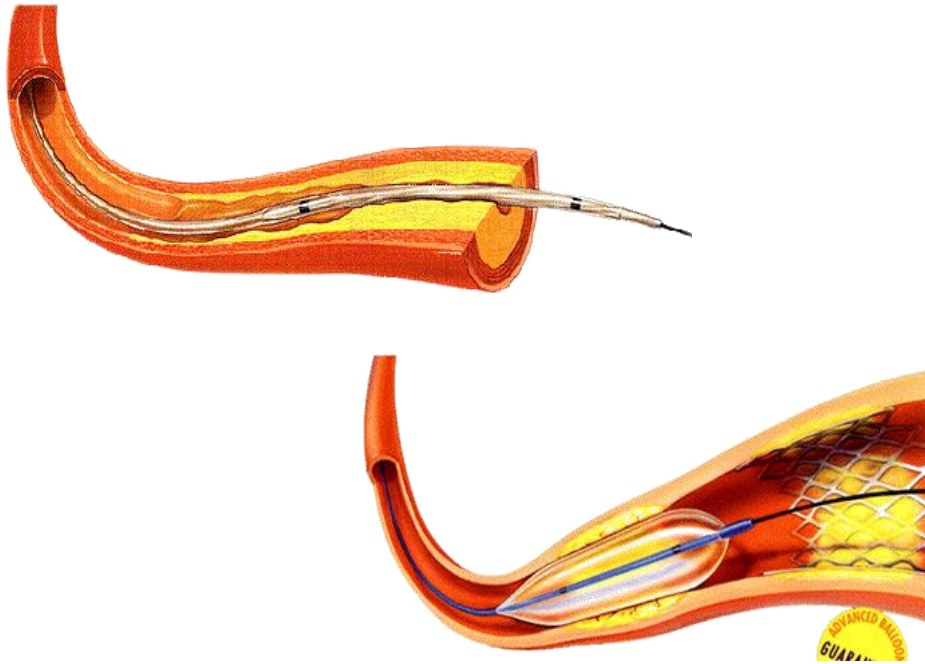


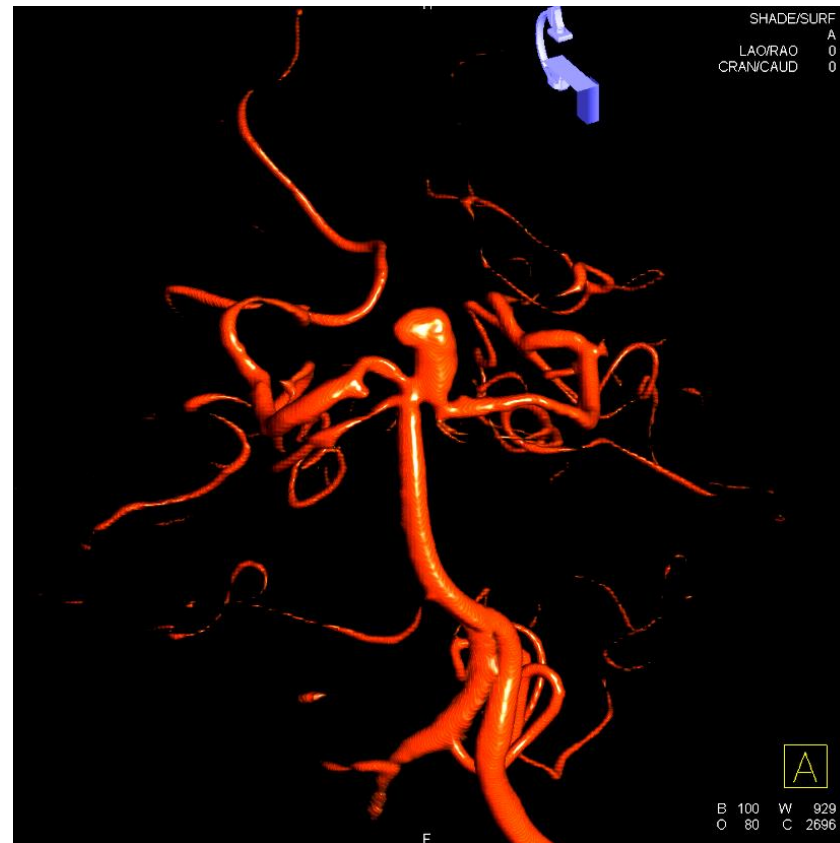


Interventionelle Radiologie



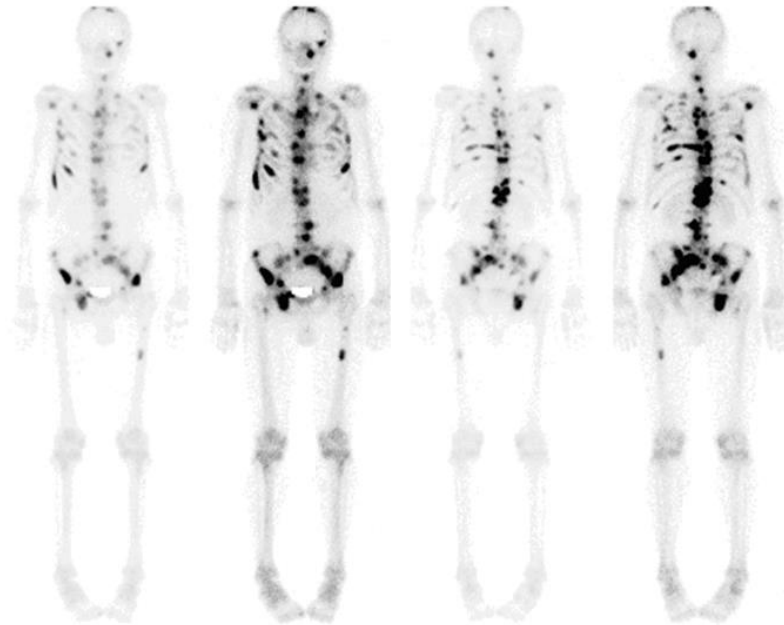
Interventionelle Radiologie





Nuklearmedizin





Radio-Onkologie

